



# MONTHLY MEMBERSHIP PROGRESS REPORT

District 325A2

Results as of: 2/28/2017

GMT: NAZMUL HAQUE

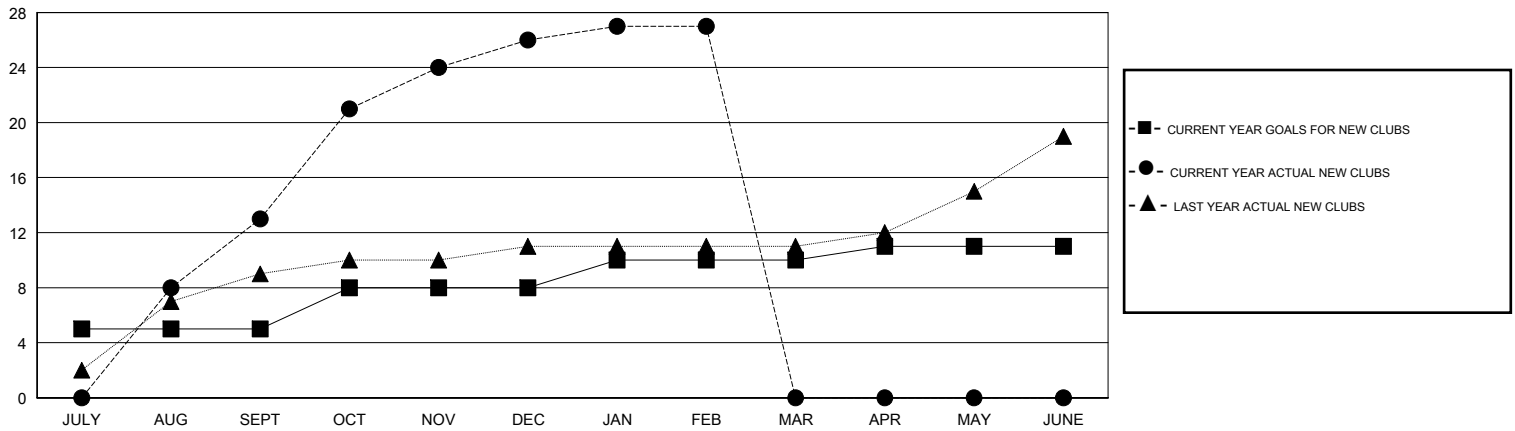
LOCATION NEPAL

GMT CA

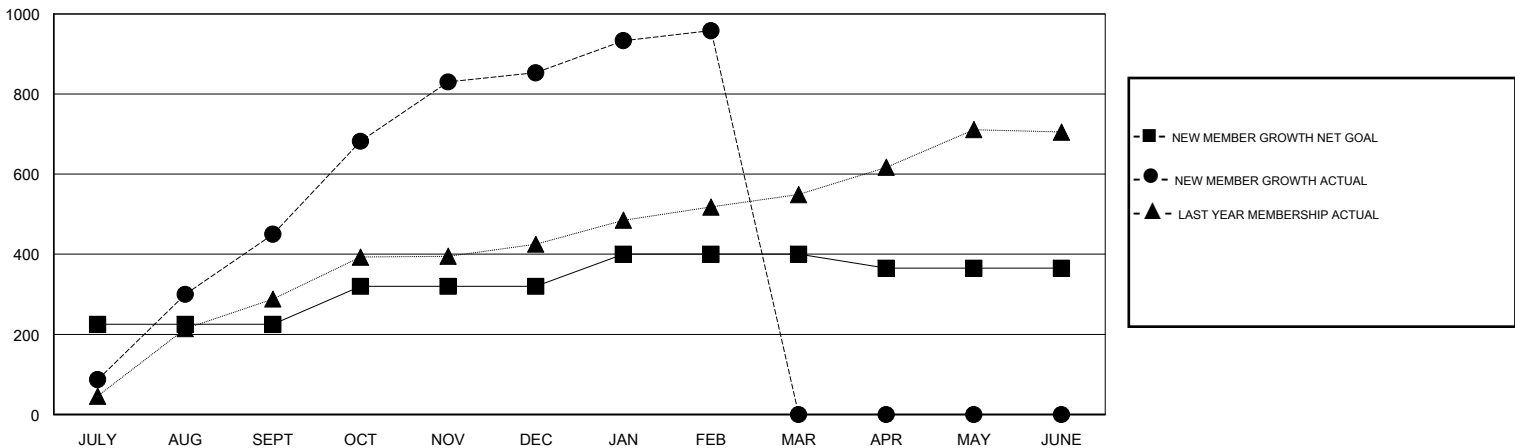
Clubs			
RESULTS FOR 2016-2017			
QUARTER	NEW CLUB GOAL	NEW CLUBS	DROPPED CLUBS
JULY/AUG/SEPT	5	13	0
OCT/NOV/DEC	3	13	1
JAN/FEB/MAR	2	1	0
APR/MAY/JUNE	1	0	0

Members			
RESULTS FOR 2016-2017			
QUARTER	NEW MEMBER GROWTH NET GOAL (not reinstated or transfers)	NEW MEMBER GROWTH ACTUAL (not reinstated or transfers)	DROPPED MEMBERS ACTUAL (including transfers)
JULY/AUG/SEPT	225	534	84
OCT/NOV/DEC	95	515	112
JAN/FEB/MAR	80	153	48
APR/MAY/JUNE	-35	0	0

GOALS AND ACTUAL NEW CLUBS CUMULATIVE



GOALS AND ACTUAL MEMBERS CUMULATIVE



DROPPED CLUBS: 1	103 CLUBS OF 150 ADDED 1 OR MORE NEW MEMBERS	<u>GENDER DISTRIBUTION</u>	
DROPPED MEMBERS		MALE	3,134 (75.43%)
DECEASED	1	FEMALE	1,021 (24.57%)
CLUB CANCELLED	4	TOTAL FAMILY UNIT MEMBERS	
OTHER	239	2,397	
TOTAL	244	FAMILY MEMBERS PAYING HALF DUES	
		1,488	

[CLICK HERE FOR CUMULATIVE MEMBERSHIP DATA](#)